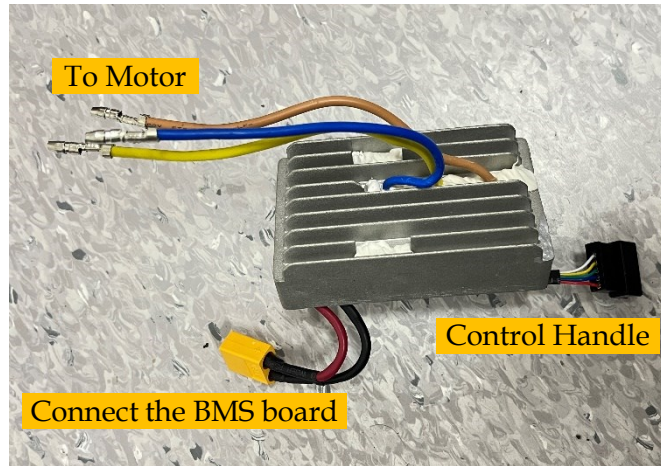


NO.	Contents	Page
1	Replace the PCBA	5
2	Replace the Battery Box Assembly	7
3	Replace the Duct set	9
4	Replace the Handle Assembly	12

Troubleshooting

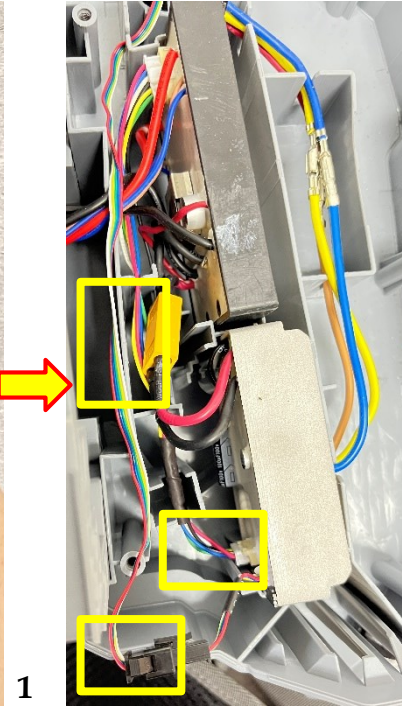
Problem	Possible cause	Fault Position	Test & Solution	Page
Not working	Faulty battery or faulty battery contacts	Battery	Install the battery and pull the trigger, the battery light should be green and the LED or fan on the working head should be on.	
	Put in a healthy battery, pull the trigger, and the battery's light doesn't come on	Battery Box Assembly	Replace the Battery Box Assembly .	7
	Put in a healthy battery, pull the trigger, battery's indicator light come on, but the tool does not work	Battery Box Assembly	Replace the Battery Box Assembly .	7
	The battery indicator lights up when a healthy battery is inserted without pulling the trigger	Battery Box Assembly	Replace the Battery Box Assembly .	7
	Release the trigger, the battery light goes off immediately	PCBA	Replace the PCBA .	5
	Only running for a few seconds at a time, can get to restart but only runs for a few seconds.	PCBA	Replace the PCBA .	5
	Did not start. when trigger pulled only a metallic click sound	Duct Set	Replace the Duct Set .	9
	Pull the trigger, the LCD displays well and the speed change will be displayed on the screen, but the motor does not work	Duct Set	Replace the Duct Set .	9
Low speed	keep running at low speed	Duct Set	Replace the Duct Set .	9
Noise	Making a really loud abnormal noise	Duct Set	Replace the Duct Set .	9
LCD Monitor problem	Blurry screen, abnormal colors, etc. The blower work, but LCD blurry screen, abnormal colors, etc.	Handle Assembly	Replace the Handle Assembly .	11

Replace the PCBA

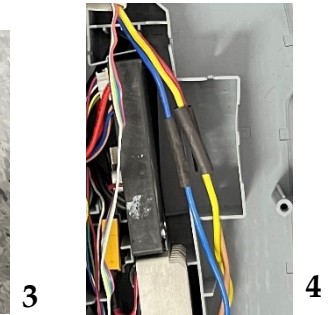
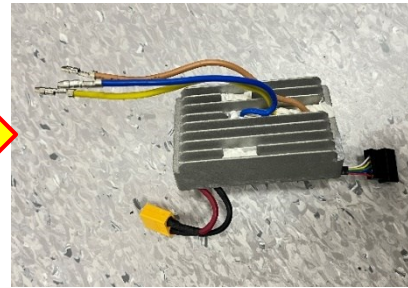


PCBA

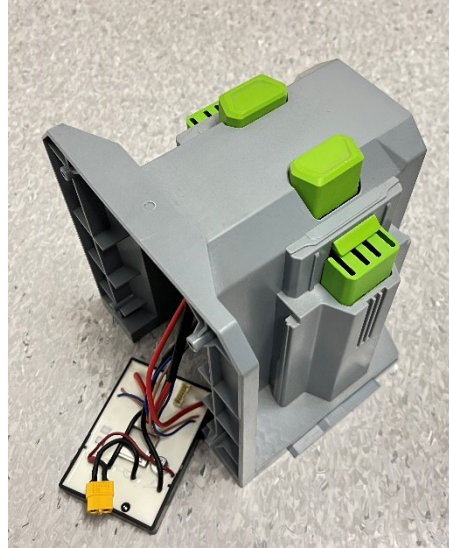
Replace the PCBA



1. Loosen all screws to open the housing.
2. Pull out the housing.
3. Unplug cables marked by yellow squares in fig.2.
4. Replace the PCBA.
5. Put on heat shrink to prevent short circuit.

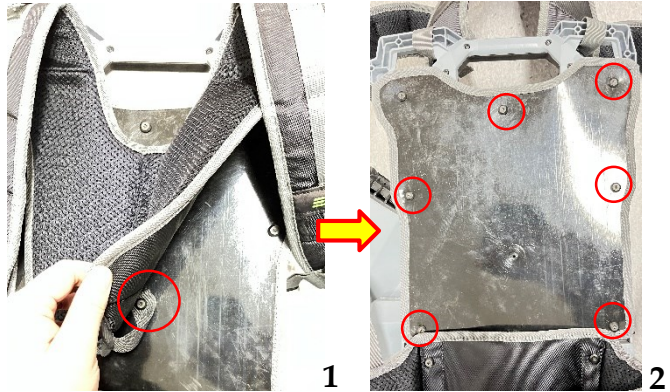


Replace the Battery Box Assembly

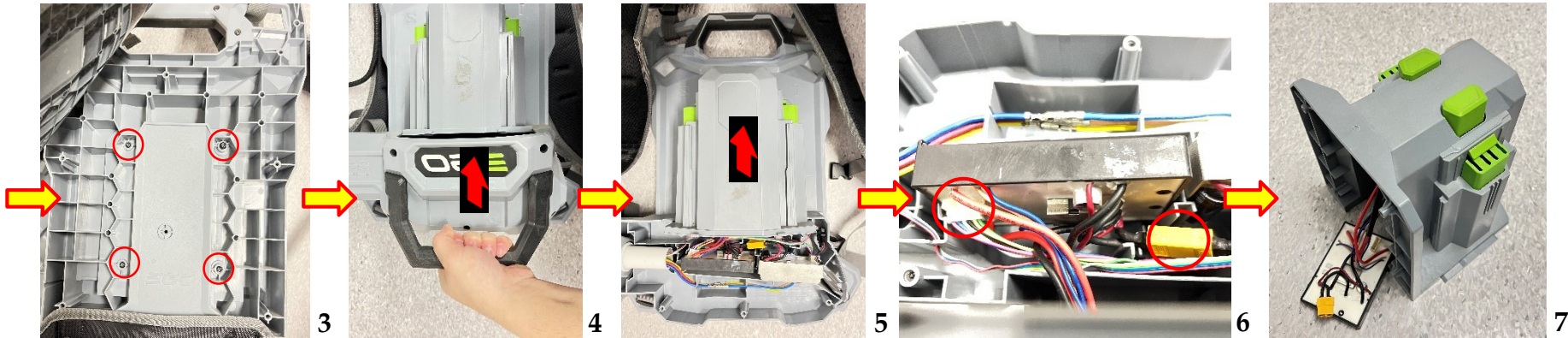


Battery Box Assembly

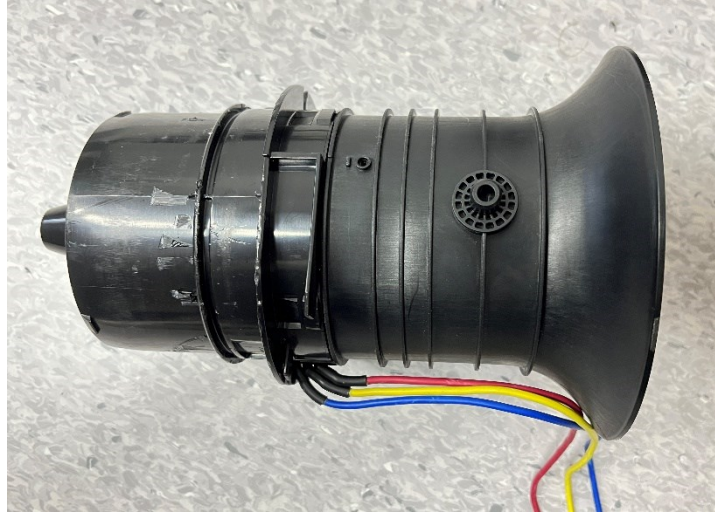
Replace the Battery Box Assembly



1. Loosen the center screw and fold up the strap to expose the backboard.
2. Loosen screws marked by red circles (it is not necessary to loosen all the screws on the backboard)
3. Fold up the backboard to loosen the 4 screws under it.
4. First remove the bottom housing, then unplug the wire marked in fig.6 to pull out the battery box.

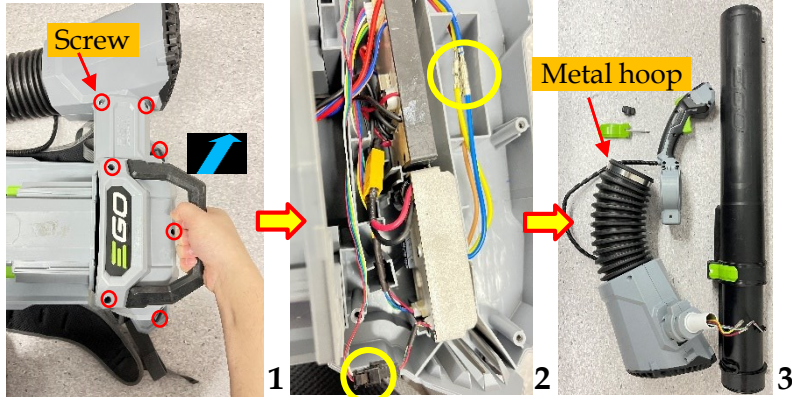


Replace the Duct Set (Motor)

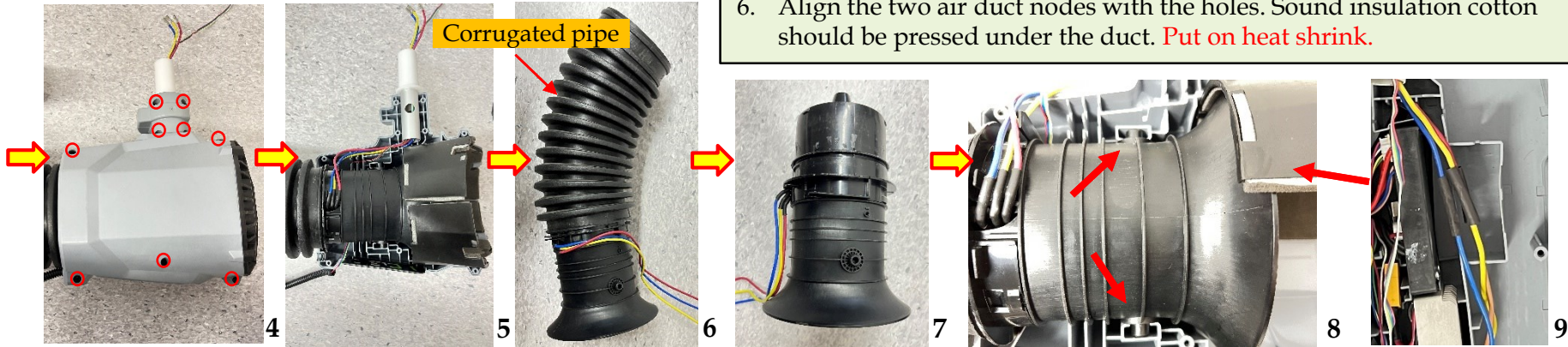


Duct Set

Replace the Duct Set (Motor)



1. Loosen all screws to open the housing.
2. Unplug the wires marked with the yellow circle.
3. Loosen the metal hoop to remove the blower tube.
4. Remove the housing as shown in fig.4.
5. Remove the air duct set and separate the bellows. The separation method is shown on the next page.
6. Align the two air duct nodes with the holes. Sound insulation cotton should be pressed under the duct. **Put on heat shrink.**



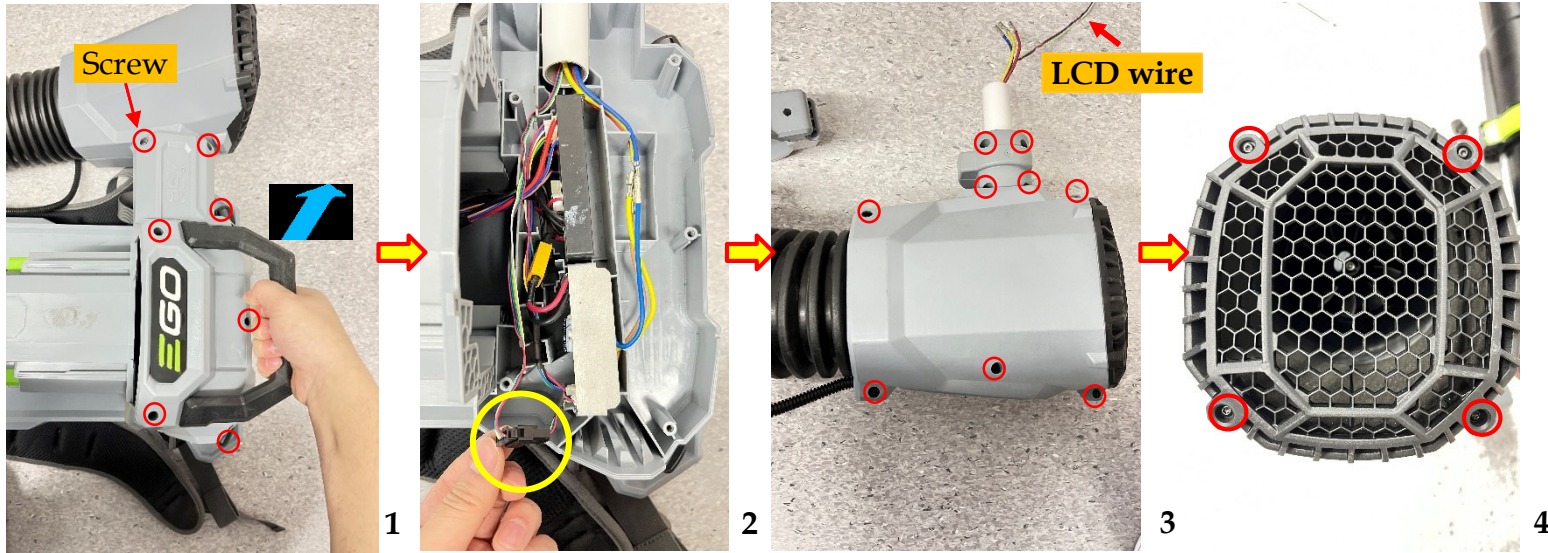
Replace the Handle Assembly



Handle Assembly

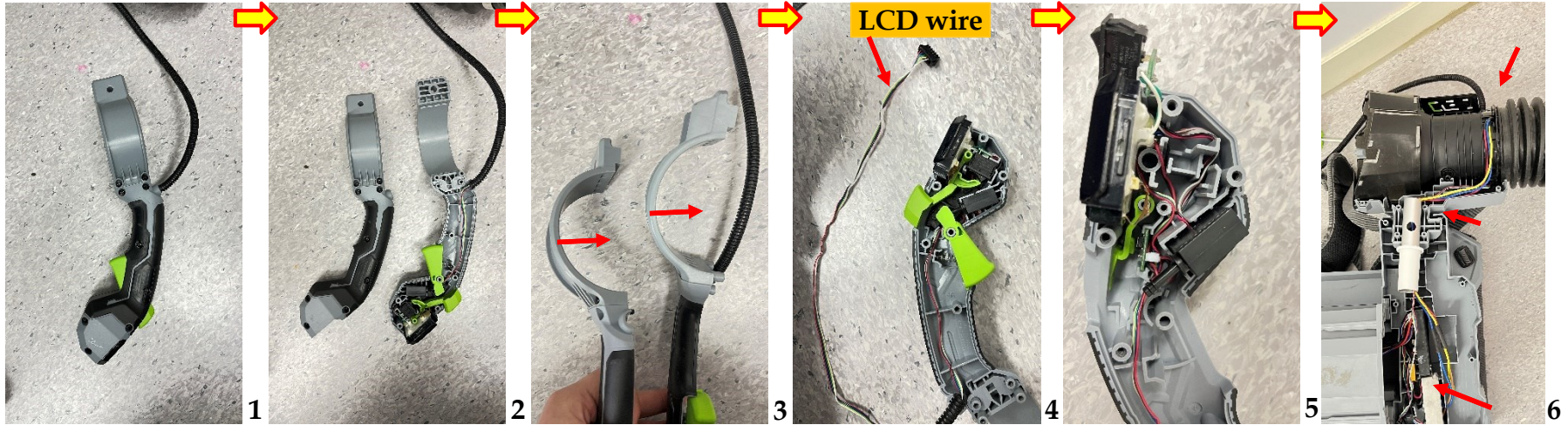
- Replace the LCD screen or the switch on the handle, please refer to pages 12 ~ 13
- Replace the trigger on the handle, please refer to page 13. (**No need to open the main body housing**)

Replace the LCD display and switch in handle



1. Loosen all screws to open the housing. Unplug the terminal of the handle assembly from the PCBA.
2. Open the housing shown in fig.3 & fig.4. pull out the LCD wire.

Replace the trigger in handle



1. Loosen all screws to open the Handle housing.
2. Slide out the base in the direction of the arrow.
3. Pull out the LCD wire if LCD display or switch need to be replaced.
4. Internal wires routing. The LCD wires pass under the channel and connect to the PCB through the sleeve

CHERVON[®]
Better Tools. Better World.

