

REPAIR GUIDELINE

String Trimmer_ST1620T



Issue Date: 2021/12/31

Table of Contents

NO.	Contents	Page
1	Tool List	3
2	Replace the Front Handle Set	4-7
3	Replace the Protective Cover ASSY	8-13
4	Replace the Trimmer Head	14-20

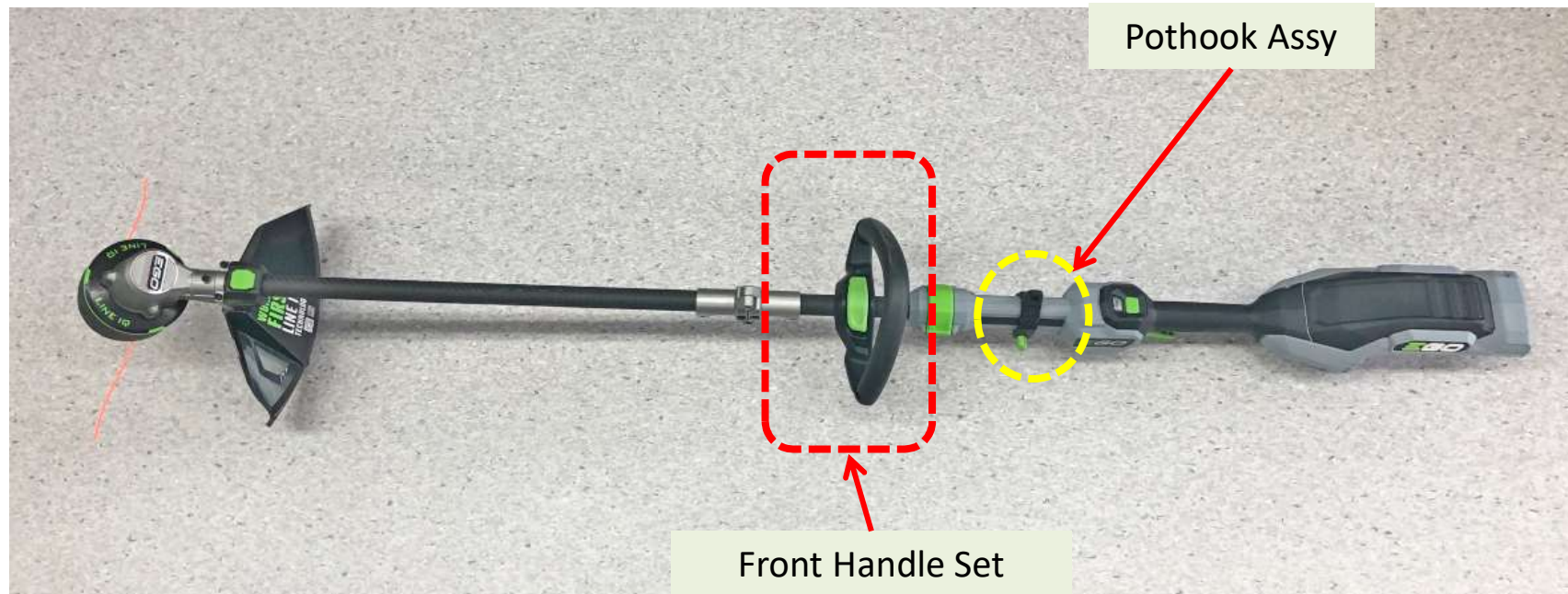
Tool List For Repair

NO.	Tool List	SPEC	Remark
1	Socket/Impact wrench	13mm	
2	Torx screwdriver	T-15	
3	Hex wrench	5mm	

Part 1: How to Replace the Front Handle Set

Replace the Front Handle Set

1. Remove the front handle set and the pothook assy from the connecting tube. (related parts are shown on the next slide)



Replace the Front Handle Set

2. Replace with a new part as you need.

Handle Lever Set



Wing Nut

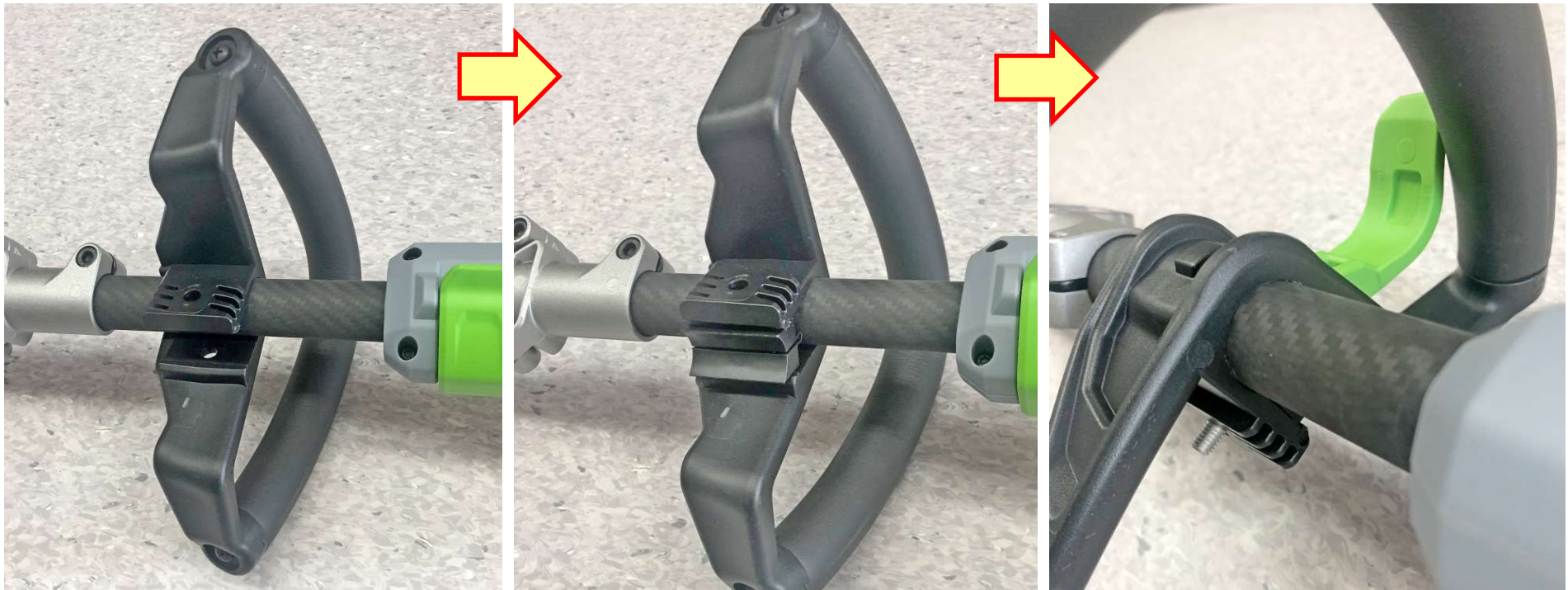
Clamping Block



Pothook Assy

Replace the Front Handle Set

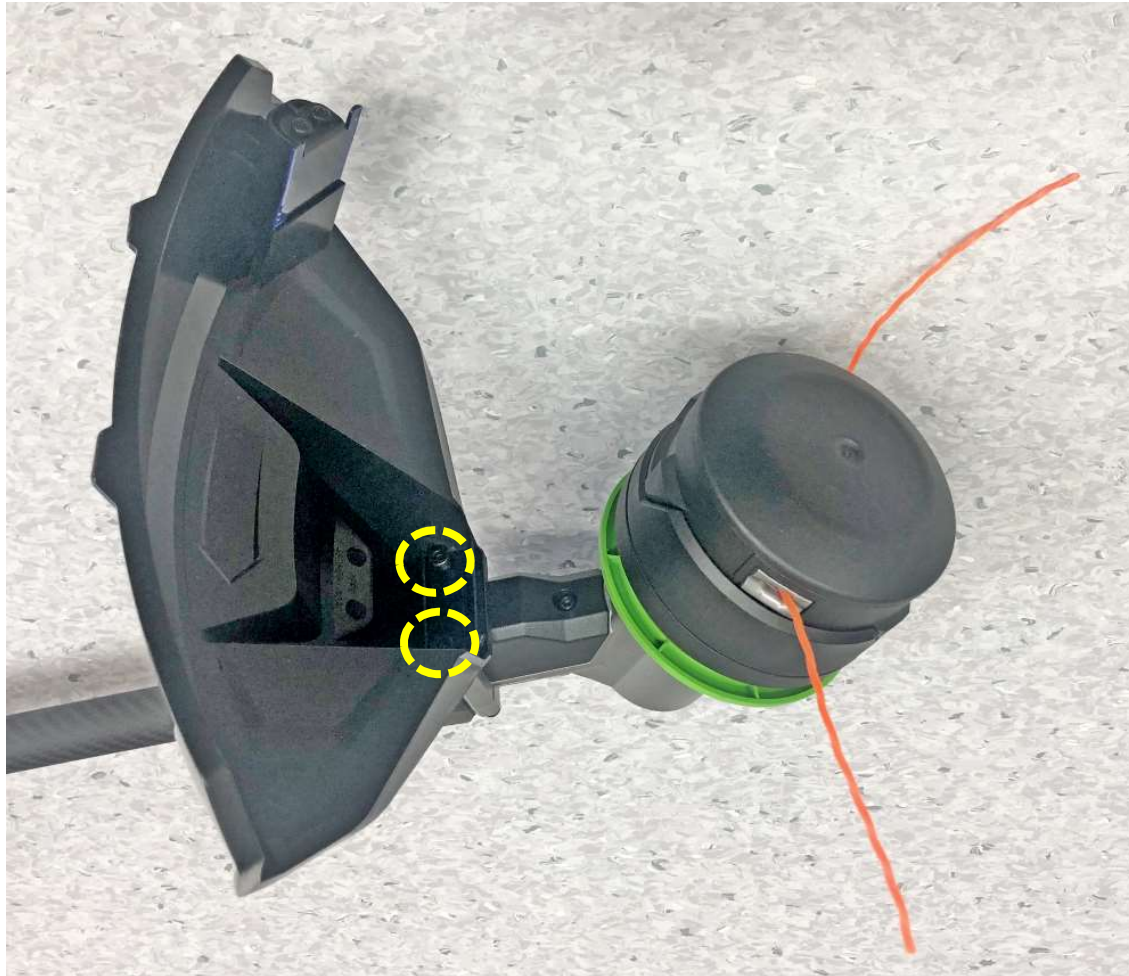
3. Place the handle onto the connecting tube, slide in the clamping block and lock them with the wing nut.



Part 2: How to Replace the Protective Cover ASSY

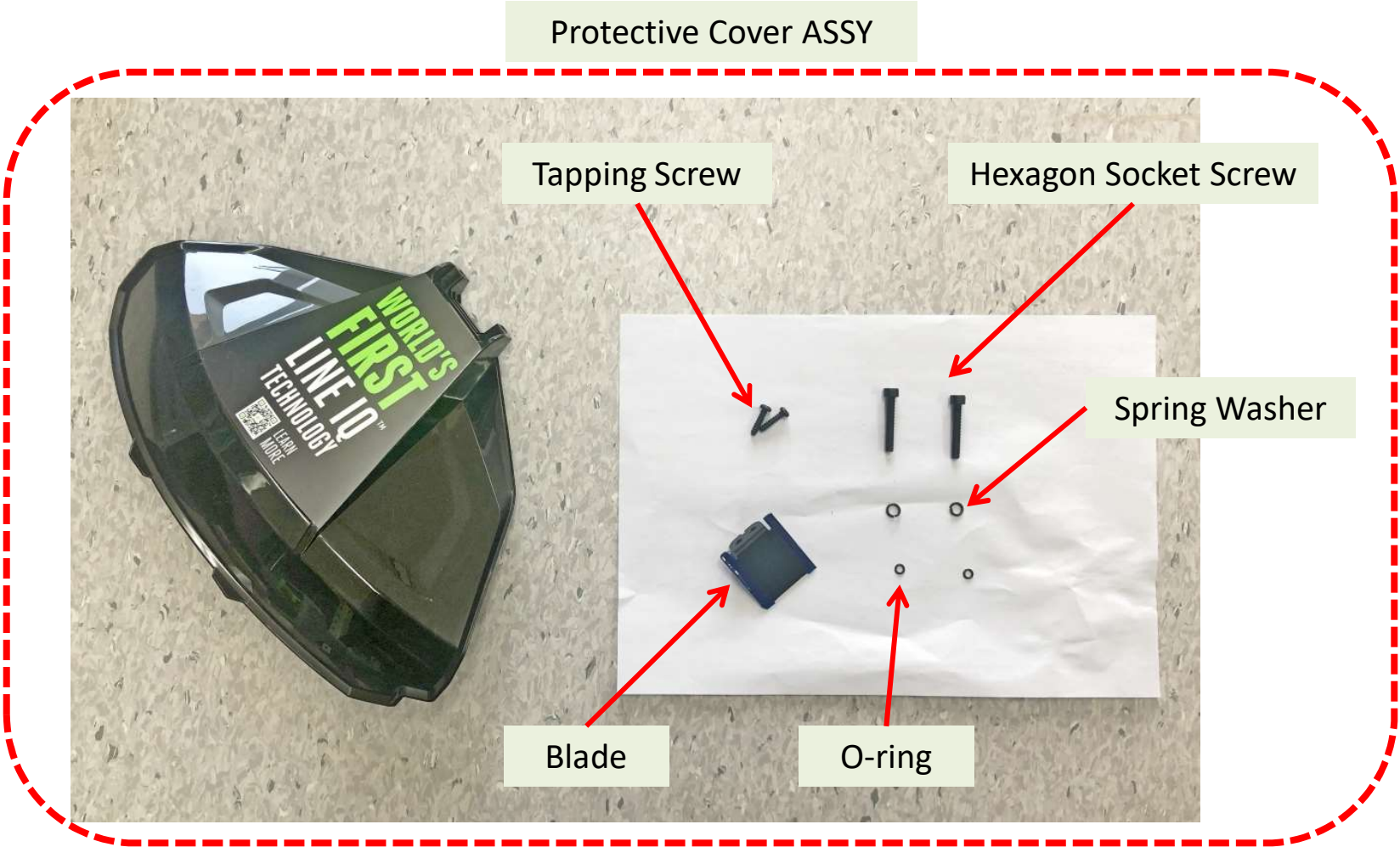
Replace the Protective Cover ASSY

1. Use the hex wrench to loose the 2 screws on the protective cover to remove the cover.



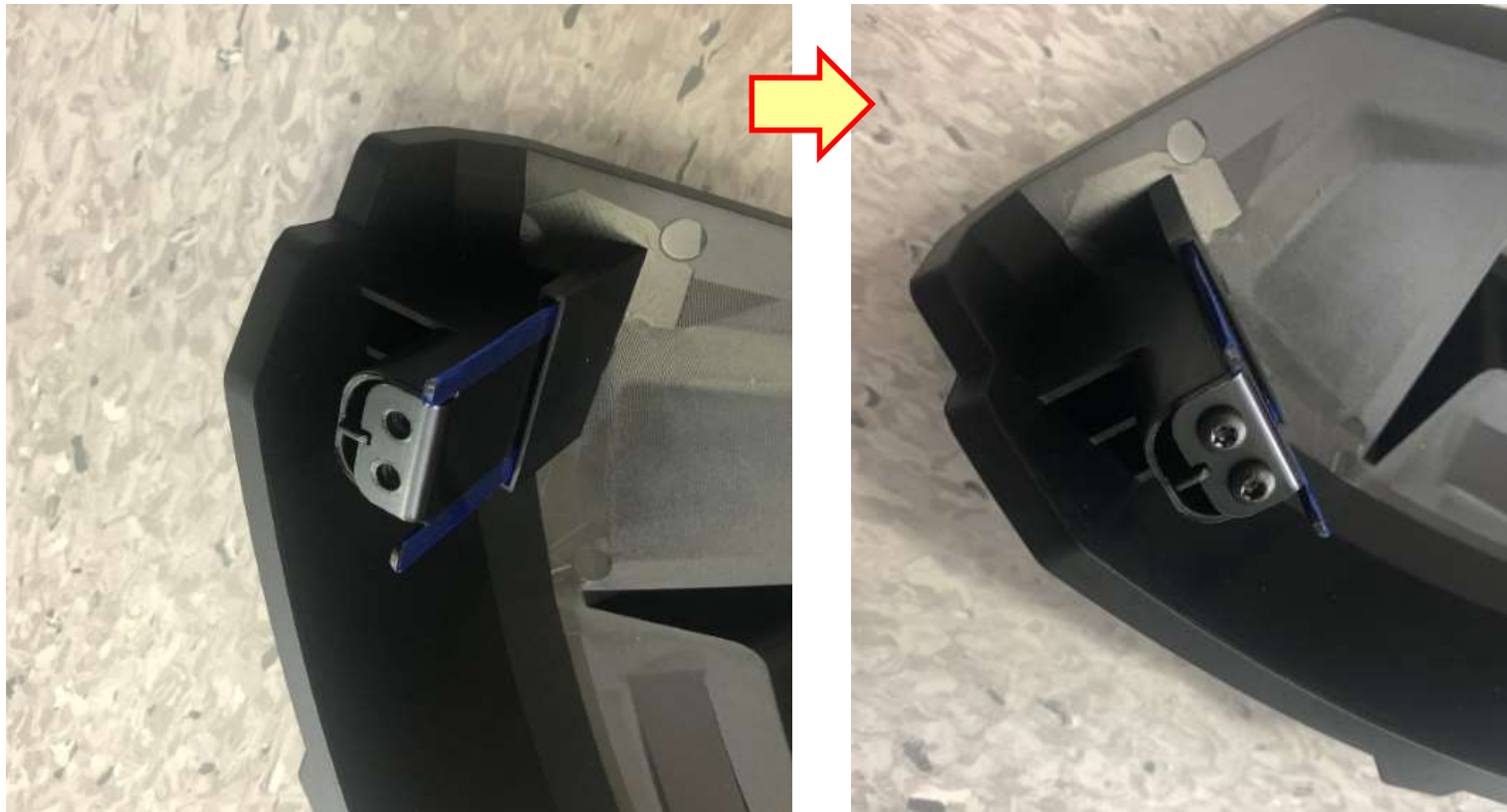
Replace the Protective Cover ASSY

2. Replace the following part as you need.



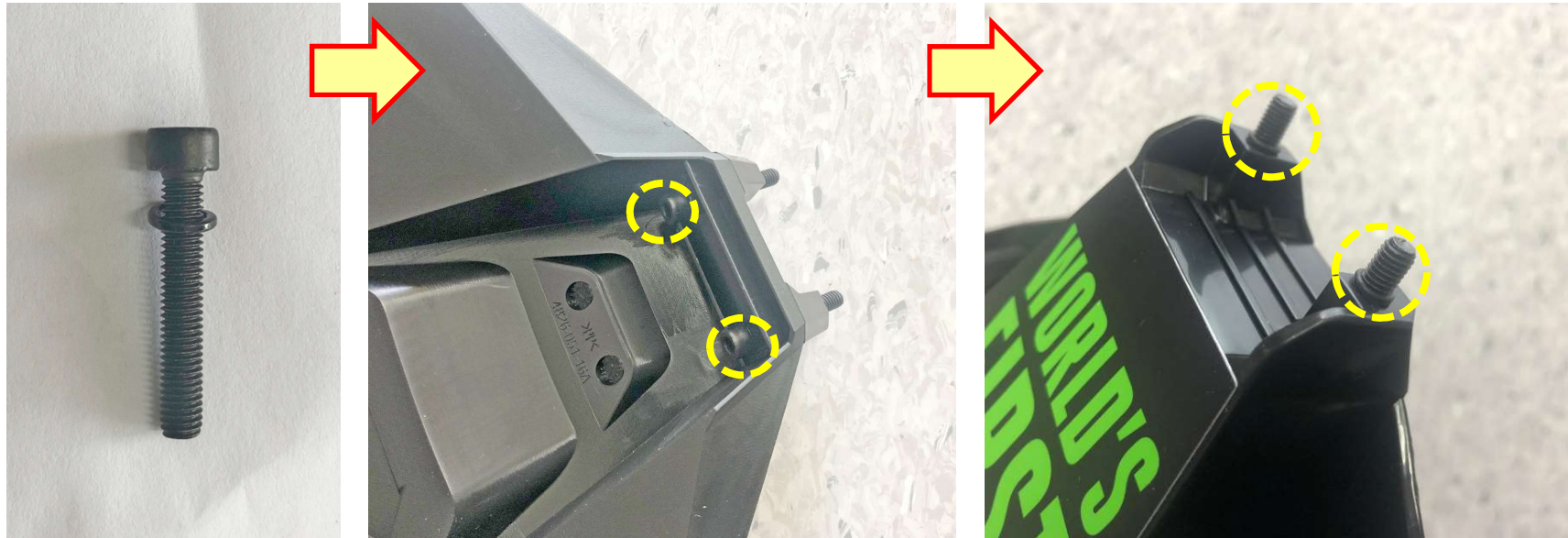
Replace the Protective Cover ASSY

3. Place the blade onto the cover and fasten it with two tapping screws.



Replace the Protective Cover ASSY

4. Place the spring washer onto the screw and place them onto the cover.
5. Place the O-ring onto the screw as shown below.



Replace the Protective Cover ASSY

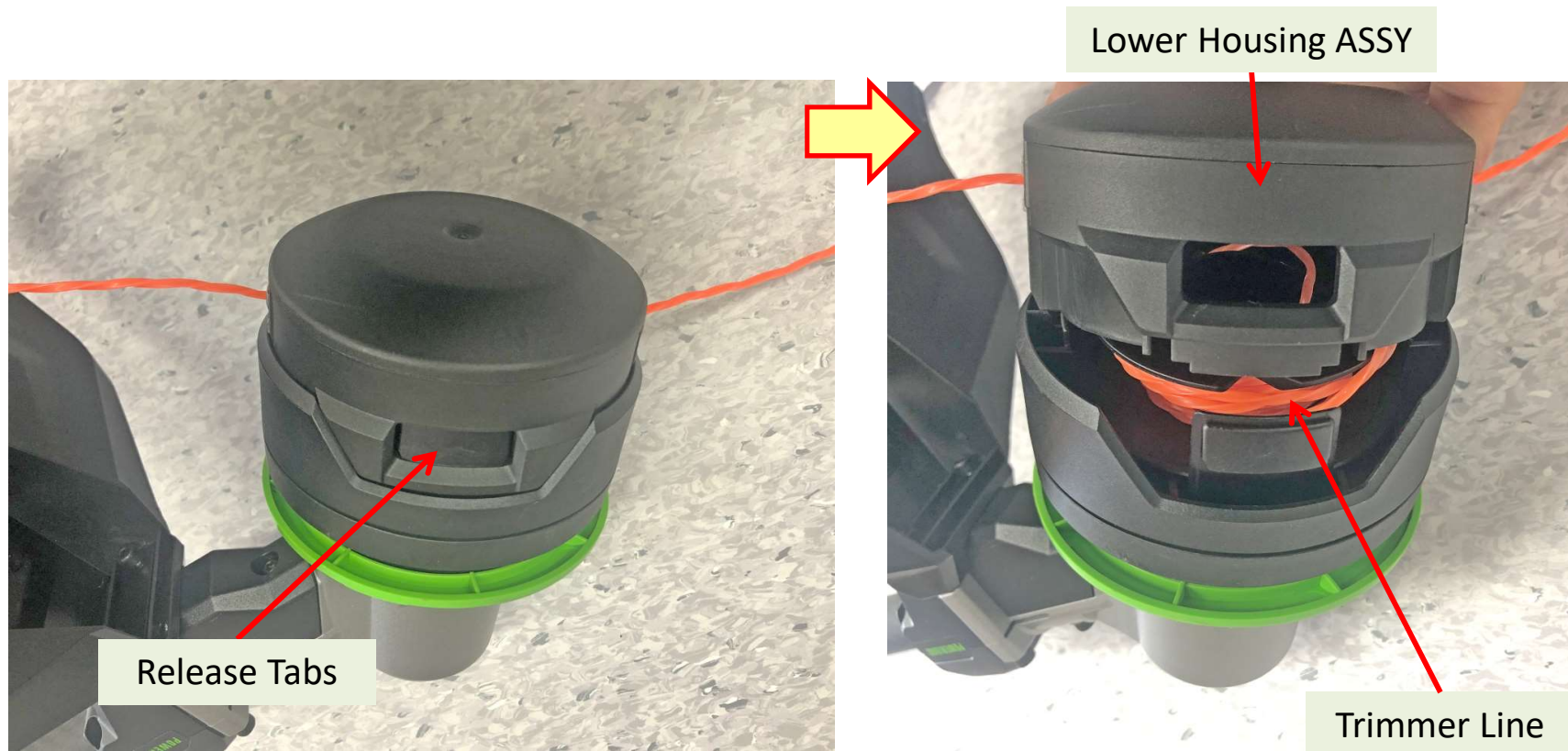
6. Assemble the cover with screws onto the trimmer head.
7. Fasten the screws with hex wrench.



Part 3 : How to Replace the Trimmer Head

Replace the Trimmer Head

1. Press the release tabs on the trimmer head and remove the lower housing assembly of the trimmer head by pulling it straight out.



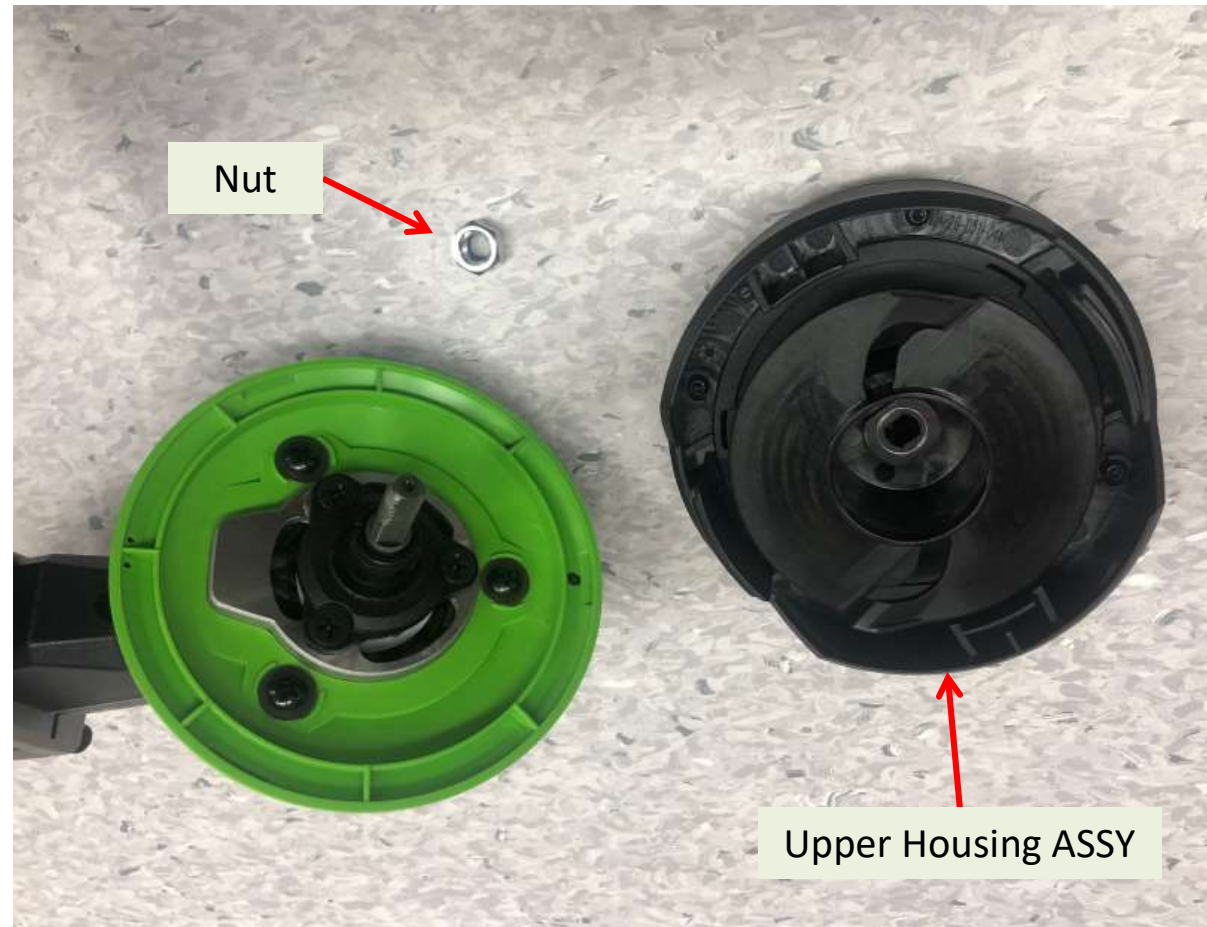
Replace the Trimmer Head

2. Remove the trimmer line from the trimmer head.
3. Wear gloves. Use one hand to grasp the upper housing assembly to stabilize it and use the other hand to hold an impact/socket wrench to loosen the nut in a counterclockwise direction.



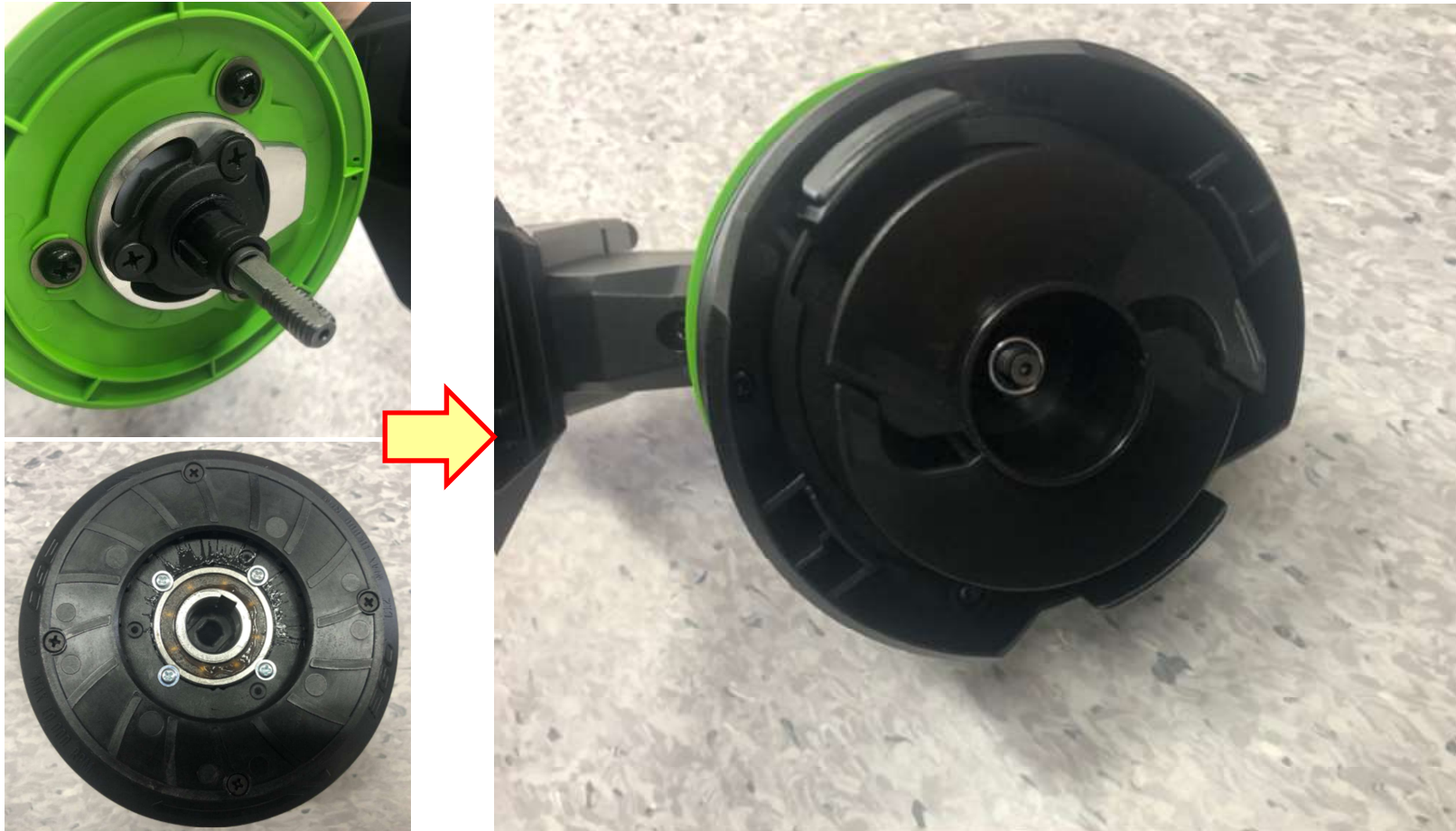
Replace the Trimmer Head

4. Replace the upper housing assembly or the nut as you need.



Replace the Trimmer Head

5. Re-assemble the upper housing assembly onto the trimmer head and tighten the nut.



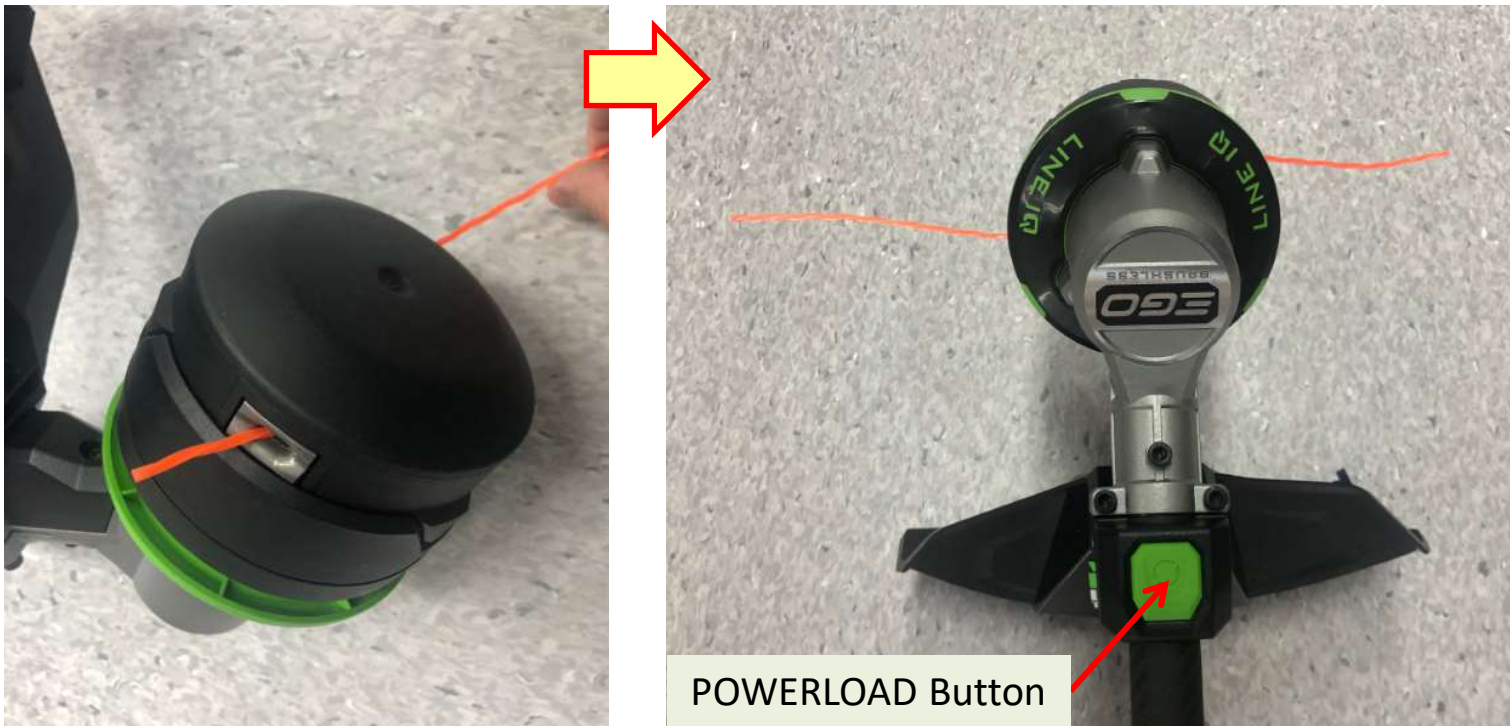
Replace the Trimmer Head

6. With one hand holding the trimmer head, use another hand to grasp the lower housing assembly and align the slots in the lower housing assembly with the release tabs.
7. Press the lower housing assembly until it snaps into place, at which time you will hear a distinct click sound.



Replace the Trimmer Head

8. Insert the line into the eyelet and push the line until the end of the line comes out of the opposite eyelet. Pull the line from the other side until equal lengths of the line appear on both sides of the trimmer head.
9. Install the battery pack onto the string trimmer. Press and hold the POWERLOAD button to start the line-winding motor. The line will be wound into the trimmer head continuously.



THE END